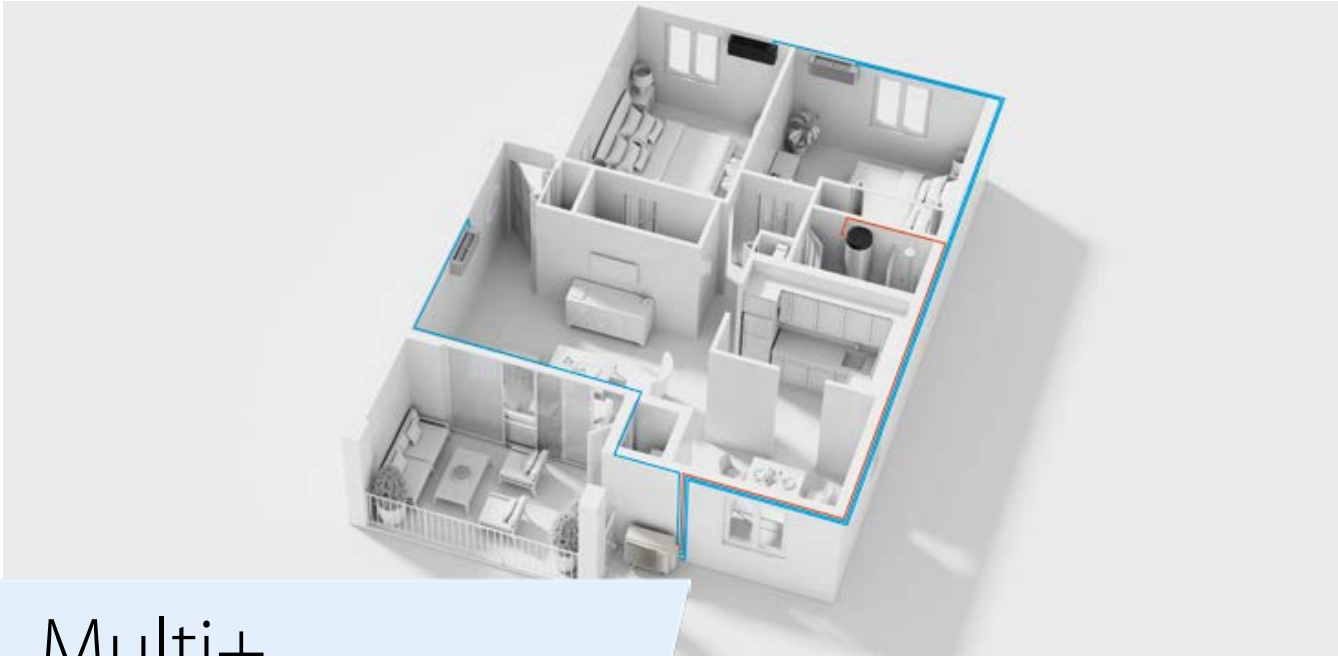


EKHWETU120BV3 / 4MWXM-A9 CKHWSU230BV3/ 5MWXM-A9



Multi+

A single system for hot water, heating and cooling

A big plus: the all-in-one solution with high efficiency

Discover one reliable solution for hot water, heating and cooling.

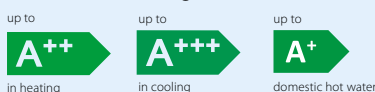
The Multi+ is an all-in-one system that delivers energy savings, reliable performance and comfort all year round.

Flexible setup: Simply connect the 120 ltr (wall-hung) or 230 ltr (floor-standing) tank and a variety of indoor units (wall, ceiling or floor mounted) to only one Multi+ outdoor unit.

User-friendly controls: The full text display on the tank makes scheduling and setting adjustment easy. All indoor units are compatible with the Onecta App which easily integrates with Google Assistant and Amazon Alexa.

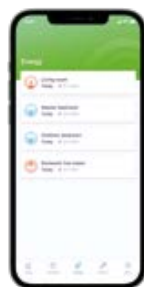
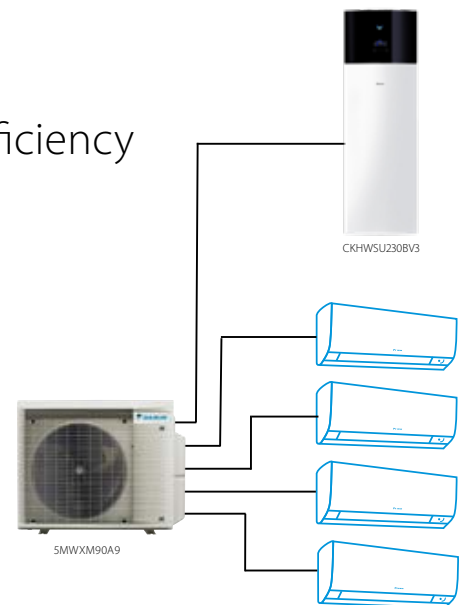
Non-stop comfort: Whether you need hot water, heating, or cooling, the Multi+ lets you set priorities to match your preferences.

High energy efficiency: Seasonal efficiency values up to A+++ in cooling and A++ for heating.



Easy installation: Choose the most suitable location for the indoor and outdoor units. Installation, wiring, drain piping, and initial setup are all quick and straightforward.

There's no need to replace the existing piping of your current electric hot water tank. With water connections accessible from both the top and bottom, installation and maintenance are simple and hassle-free.



> Connect Multi+ outdoor unit with up to four indoor units and a 120 or 230 ltr tank to provide domestic hot water.



