



Roundflow cassette

Seasonal Classic

FCQG-F / RZQSG Seasonal Classic

Restricted space suspended ceilings in office and retail applications



Daikin's unique 360° Roundflow cassette, re-engineered for Seasonal Efficiency. The compact cassette has a slim casing and is designed for restricted space suspended ceilings in office and retail applications.

The remote controller gives access to a range of energy saving settings, allowing control over set-point ranges and day-to-day use of controls. The controller also gives a kWh indication of the power consumed by the cassette and outdoor unit so you can monitor your energy usage.

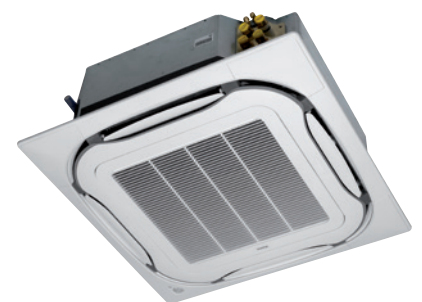
The Roundflow cassette and Seasonal Classic condenser can be used as a cost effective way to replace old equipment as they are able to use existing R22 and R407C pipe-work.



BRC1E52A



RZQSG100L8V1



FCQG-F



FCQG-F / RZQSG

Features	Benefits
Programmable air discharge outlets via remote control	Room configurations can be changed without re-positioning cassette
R22 Replacement technology	Re-use of existing R22 and R407C piping possible, allowing only fan-coil and condensers to be replaced
D3 connection as standard	Allows integration of split system into Daikin building management systems
Presence sensor	Controlling temperature set point based on occupancy can reduce running costs by up to 27%
Self-cleaning decoration panel	Automatic cleaning of air-filter can save up to 30% in running costs

Indoor Units	Single Phase				3 Phase				
	FCQG71F	FCQG100F	FCQG125F	FCQG140F	FCQG100F	FCQG125F	FCQG140F		
Capacity	UK Total Cooling	kW	7.28	10.80	13.60	14.90	10.80	13.60	14.90
	UK Sensible Cooling	kW	4.99	7.44	9.30	10.25	7.44	9.30	10.25
	Nominal Cooling	kW	6.80	9.50	12.00	13.40	9.50	12.00	13.40
	Nominal Heating	kW	7.50	10.80	13.50	15.50	10.80	13.50	15.50
Seasonal Efficiency (EN14825) COOLING	Energy Label		A++	A++	A	-	A++	A	-
	Pdesign	kW	6.80	9.50	12.00	-	9.50	12.00	-
	SEER		6.10	6.50	5.30	-	6.50	5.30	-
	Annual Energy Consumption	kWh	390	511	792	-	511	792	-
Seasonal Efficiency (EN14825) HEATING	Energy Label		A+	A+	A+	-	A+	A+	-
	Pdesign	kW	6.33	7.60	8.03	-	7.60	8.03	-
	SCOP		4.10	4.10	4.01	-	4.10	4.01	-
	Annual Energy Consumption	kWh	2162	2595	2803	-	2595	2803	-
Nominal Efficiency	EER / COP		3.21 / 3.61	3.3 / 3.54	3.21 / 3.41	3.01 / 3.41	3.3 / 3.54	3.21 / 3.41	3.01 / 3.41
	Energy Label		A / A	A / B	A / B	B / B	A / B	A / B	B / B
	Annual Energy Consumption	kWh	971	1440	1870	2225	1440	1870	2225
Air Flow Rate (Cooling)	High / Nom / Low	m³/sec	0.25 / 0.202 / 0.15	0.38 / 0.293 / 0.21	0.43 / 0.32 / 0.21	0.43 / 0.32 / 0.21	0.38 / 0.293 / 0.21	0.43 / 0.32 / 0.21	0.43 / 0.32 / 0.21
Dimensions (with Decoration Panel)	Height	mm	204 (264)	246 (306)	246 (306)	246 (306)	246 (306)	246 (306)	246 (306)
	Width	mm	840 (950)	840 (950)	840 (950)	840 (950)	840 (950)	840 (950)	840 (950)
	Depth	mm	840 (950)	840 (950)	840 (950)	840 (950)	840 (950)	840 (950)	840 (950)
Weight (with Decoration Panel)		kg	21 (26.4)	24 (29.4)	24 (29.4)	24 (29.4)	24 (29.4)	24 (29.4)	24 (29.4)
Sound Pressure (Cooling)	High / Nom / Low	dBA	33 / 31 / 28	37 / 33 / 29	41 / 35 / 29	41 / 35 / 29	37 / 33 / 29	41 / 35 / 29	41 / 35 / 29
Sound Power		dBA	51	54	58	58	54	58	58

Outdoor Units		RZQSG71L3V1	RZQSG100L9V1	RZQSG125L9V1	RZQSG140L9V1	RZQSG100L8Y1	RZQSG125L8Y1	RZQSG140L1Y1	
Dimensions	Height x Width x Depth	mm	770 x 900 x 320	990 x 940 x 320	1430 x 940 x 320	990 x 940 x 320		1430 x 940 x 320	
Weight		kg	67	81	102	82		101	
Electrical Details	Power Supply		1ph				3ph		
	Running Current	A	8.66	11.77	15.29	18.19	4.40	5.72	6.80
	Starting Current	A	4	4	4	4	4	4	4
	Max Fuse Size	A	20	32	32	32	20	20	20
Interconnection Wiring	Core / Cable size		3+E / 1.5				3+E / 1.5		
Piping Connections	Liquid / Gas	inches (mm)	3/8 (9.5) / 5/8 (15.9)				3/8 (9.5) / 5/8 (15.9)		
Pipework	Maximum Length	m	50	50	50	50	50	50	
	Maximum Vertical Rise	m	30	30	30	30	30	30	
	Precharged to	m	30	30	30	30	30	30	
	Additional Charge	g/m	Refer to Installation Manual				Refer to Installation Manual		
	Holding Charge	kg	2.75	2.9	2.9	4.0	2.9	2.9	4.0
Sound Pressure (Cooling)	Nom / Night Quiet	dBA	49 / 49	53 / 49	54 / 49	53 / 49	53 / 49	54 / 49	53 / 49
Sound Power		dBA	65	69	70	69	69	70	69
Air Flow Rate (Cooling)	High	m³/sec	0.87	1.27	1.28	1.38	1.27	1.28	1.38
ECA Eligible			●	●		●			

Accessories
Self cleaning deco-panel (BYCQ140DG)
White louvred deco-panel (BYCQ140DW)
Presence sensor (BRYQ140A)
Fresh air intake kit (KDDQ55B140)

The present leaflet is drawn up by way of information only and does not constitute an offer binding upon Daikin UK. Daikin UK has compiled the content of this leaflet to the best of its knowledge. No express or implied warranty is given for the completeness, accuracy, reliability or fitness for particular purpose of its content and the products and services presented therein. Specifications are subject to change without prior notice. Daikin UK explicitly rejects any liability for any direct or indirect damage, in the broadest sense, arising from or related to the use and/or interpretation of this leaflet. All content is copyrighted by Daikin UK.



Daikin Europe N.V. participates in the Eurovent Certification programme for Air conditioners (AC), Liquid Chilling Packages (LCP), Air handling units (AHU) and Fan coil units (FCU). Check ongoing validity of certificate online: www.eurovent-certification.com or using: www.certiflash.com