



Roundflow cassette

Seasonal Efficiency

FCQG-F / RXS-L

Restricted space suspended ceilings in office and retail applications



Daikin's unique 360° Roundflow cassette, re-engineered for Seasonal Efficiency. The compact cassette has a slim casing and is designed for restricted space suspended ceilings in office and retail applications.

The remote controller gives access to a range of energy saving settings, allowing control over set-point ranges and day-to-day use of controls. The controller also gives a kWh indication of the power consumed by the cassette and outdoor unit so you can monitor your energy usage.

The Roundflow cassette and RXS-L condenser can be used as a cost effective way to replace old equipment as they are able to use existing R22 and R407C pipe-work.

The Roundflow cassette can be installed as an individual system using the RXS-L outdoor unit. Up to 4 FCQG-F indoor units can be connected to a Sky Air outdoor – providing simultaneous operation for large spaces. The Roundflow cassette can also be connected to the MXS multi range, for up to 5 indoor units.

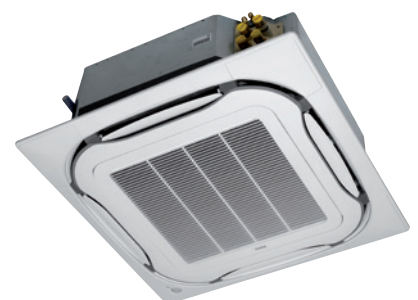
FCQG-F / RXS-L pairs are listed on the Energy Technology List (ETL) – the definitive list of products that qualify for Enhanced Capital Allowance (ECA).



BRC1E52A wired controller



RXS35L



FCQG50F

FCQG-F / RXS-L

Features	Benefits
Programmable air discharge outlets via remote control	Room configurations can be changed without re-positioning cassette
R22 Replacement technology	Re-use of existing R22 and R407C piping possible, allowing only fan-coil and condensers to be replaced
D3 connection as standard	Allows integration of split system into Daikin building management systems
Presence sensor	Controlling temperature set point based on occupancy can reduce running costs by up to 27% over a 3 hour period
Self-cleaning decoration panel	Automatic cleaning of air-filter can save up to 50%* in running costs

* See self-cleaning cassette case study

Indoor Units			FCQG35F	FCQG50F	FCQG60F
Capacity	UK Total Cooling	kW	3.32	4.89	5.57
	UK Sensible Cooling	kW	2.29	3.26	3.67
	Nominal Cooling	kW	3.40	5.00	5.70
	Nominal Heating	kW	4.20	6.00	7.00
Seasonal Efficiency (EN14825) COOLING	Energy Label		A++	A++	A++
	Pdesign	kW	3.50	5.00	5.70
	SEER		6.35	6.48	6.22
	Annual Energy Consumption	kWh	193	270	321
Seasonal Efficiency (EN14825) HEATING	Energy Label		A++	A++	A+
	Pdesign	kW	3.32	4.36	4.71
	SCOP		4.90	4.29	4.00
	Annual Energy Consumption	kWh	949	1426	1646
Nominal Efficiency	EER / COP		3.58 / 3.5	3.55 / 3.7	3.48 / 3.52
	Energy Label		A / B	A / A	A / B
	Annual Energy Consumption	kWh	475	705	820
Air Flow Rate (Cooling)	High / Nom / Low	m ³ /sec	0.21 / 0.177 / 0.15	0.21 / 0.178 / 0.15	0.23 / 0.187 / 0.15
Dimensions (with Decoration Panel)	Height	mm	204 (264)	204 (264)	204 (264)
	Width	mm	840 (950)	840 (950)	840 (950)
	Depth	mm	840 (950)	840 (950)	840 (950)
Weight (with Decoration Panel)		kg	18 (23.4)	19 (24.4)	19 (24.4)
Sound Pressure (Cooling)	High / Nom / Low	dBA	31 / 29 / 27	31 / 29 / 27	33 / 31 / 28
Sound Power		dBA	49	49	51

Outdoor Units			RXS35L3	RXS50L	RXS60L
Dimensions	Height x Width x Depth	mm	550 x 765 x 285	735 x 825 x 300	735 x 825 x 300
Weight		kg	34	47	48
Electrical Details	Power Supply			1ph	
	Running Current	A	4.00	6.30	7.40
	Starting Current	A	4.30	6.80	9.40
	Max Fuse Size	A	10	20	20
Interconnection Wiring	Core / Cable size		3+E / 1.5	3+E / 1.5	
Piping Connections	Liquid / Gas	inches (mm)	1/4 (6.4) / 3/8 (9.5)	1/4 (6.4) / 1/2 (12.7)	
Pipework	Maximum Length	m	20	30	30
	Maximum Vertical Rise	m	15	20	20
	Precharged to	m	10	10	10
	Additional Charge	g/m	20	20	20
	Holding Charge	kg	1.2	1.7	1.5
Sound Pressure (Cooling)	High / Silent Operation (Low*)	dBA	48 / 44	48 / 44*	49 / 46*
Sound Power		dBA	61	62	62
Air Flow Rate (Cooling)	High	m ³ /sec	0.60	0.85	0.84

ECA Eligible	●	●
--------------	---	---

Accessories
Self cleaning deco-panel (BYCQ140DG)
White louvred deco-panel (BYCQ140DW)
Presence sensor (BRYQ140A)
Fresh air intake kit (KDDQ55B140)

The present leaflet is drawn up by way of information only and does not constitute an offer binding upon Daikin UK. Daikin UK has compiled the content of this leaflet to the best of its knowledge. No express or implied warranty is given for the completeness, accuracy, reliability or fitness for particular purpose of its content and the products and services presented therein. Specifications are subject to change without prior notice. Daikin UK explicitly rejects any liability for any direct or indirect damage, in the broadest sense, arising from or related to the use and/or interpretation of this leaflet. All content is copyrighted by Daikin UK.



Daikin Europe N.V. participates in the Eurovent Certification programme for Air conditioners (AC), Liquid Chilling Packages (LCP), Air handling units (AHU) and Fan coil units (FCU). Check ongoing validity of certificate online: www.eurovent-certification.com or using: www.certiflash.com