

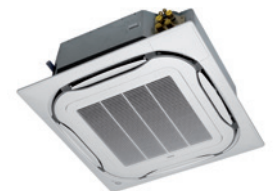


**FCAG-A / AZAS-M** *SkyAir Active-series*

**R-32** **BLUEEVOLUTION**

360° air discharge for optimum efficiency and comfort

- › Combinations with Sky Air Active series ensures good value for money for all types of commercial applications
- › Lowest installation height in the market: 204mm for class 71
- › Individual louvre control: flexibility to suit every room layout without changing the location of the unit
- › Modern style decoration panel is available in 3 different variations: white (RAL9010) with grey louvers, full white (RAL9010) or Auto-cleaning panel
- › Automatic filter cleaning results in higher efficiency & comfort and lower maintenance costs. 2 filters available: standard filter and finer mesh filter (for fine dust applications i.e. clothing shops)
- › Two optional intelligent sensors improve energy efficiency and comfort
- › No optional adapter needed for DIII-connection, link your unit directly into the wider building management system
- › Branch duct discharge allows to optimize air distribution in irregular shaped rooms or to supply air to small adjacent rooms
- › Reduced energy consumption thanks to specially developed small tube exchanger, DC fan motor and drain pump
- › Optional fresh air intake
- › Standard drain pump with 675mm lift increases flexibility and installation speed



FCAG-A



AZAS71

AZAS100-140



BRC1E53A



BRC7FA532F (optional)



BRP069A81 (optional)



**WI-FI ADAPTOR**  
**AVAILABLE AS AN OPTION**

# FCAG-A / AZAS-M

**R-32** BLUEEVOLUTION

Indoor Units			Single Phase				3 Phase		
			FCAG71A	FCAG100A	FCAG125A	FCAG140A	FCAG100A	FCAG125A	FCAG140A
Capacity	UK Total Cooling	kW	7.76	10.80	13.60	14.90	10.80	13.60	14.90
	UK Sensible Cooling	kW	5.32	7.44	9.30	10.25	7.44	9.30	10.25
	Nominal Cooling	kW	6.8	9.5	12.1	13.4	9.5	12.1	13.4
	Nominal Heating	kW	7.5	10.8	13.5	15.5	10.8	13.5	15.5
Seasonal Efficiency (EN14825) COOLING	Energy Label		A+	A+	-	-	A+	-	-
	Pdesign	kW	6.8	9.5	12.1	13.0	9.5	12.1	13.0
	SEER		5.87	5.67	5.40	6.00	5.67	5.40	6.00
	Annual Energy Consumption	kWh	405	586	1345	1300	586	1345	1300
Seasonal Efficiency (EN14825) HEATING	Energy Label		A	A	-	-	A	-	-
	Pdesign	kW	4.5	6.0	6.0	7.8	6.0	6.0	7.8
	SCOP		4.00	3.85	3.80	4.31	3.85	3.80	4.31
	Annual Energy Consumption	kWh	1575	2182	2211	2534	2182	2211	2534
Nominal Efficiency	EER/COP		3.14/3.71	3.26/4.50	2.29/4.28	2.63/3.73	3.26/4.50	2.29/4.28	2.63/3.73
Air Flow Rate (Cooling)	High / Nom / Low	m³/sec	0.255/0.208/0.155	0.380/0.293/0.206	0.433/0.320/0.206	0.433/0.320/0.206	0.380/0.293/0.206	0.433/0.320/0.206	0.433/0.320/0.206
Dimensions (with Decoration Panel)	Height	mm	204 (264)	246 (306)	246 (306)	246 (306)	246 (306)	246 (306)	246 (306)
	Width	mm	840 (950)	840 (950)	840 (950)	840 (950)	840 (950)	840 (950)	840 (950)
	Depth	mm	840 (950)	840 (950)	840 (950)	840 (950)	840 (950)	840 (950)	840 (950)
Weight (with Decoration Panel)		kg	21 (26.4)	24 (29.4)	24 (29.4)	24 (29.4)	24 (29.4)	24 (29.4)	24 (29.4)
Sound Pressure (Cooling)	High / Nom / Low	dBA	35/31/28	37/33/29	41/35/29	41/35/29	37/33/29	41/35/29	41/35/29
Sound Pressure (Heating)	High / Nom / Low	dBA	35/31/28	37/33/29	41/35/29	41/35/29	37/33/29	41/35/29	41/35/29
Sound Power (Cooling)		dBA	51	54	58	58	54	58	58

Outdoor Units			AZAS71MV1	AZAS100MV1	AZAS125MV1	AZAS140MV1	AZAS100MY1	AZAS125MY1	AZAS140MY1
Dimensions	Height x Width x Depth	mm	770 x 900 x 320	990 x 940 x 320	990 x 940 x 320	990 x 940 x 320	990 x 940 x 320	990 x 940 x 320	990 x 940 x 320
Weight		kg	60	70	70	78	70	70	77
Electrical Details	Power Supply		1ph	1ph	1ph	1ph	3ph	3ph	3ph
	Running Current	A	17.4	21.5	27.8	27	14.2	14.6	14.6
	Starting Current	A	-	-	-	-	-	-	-
	Max Fuse Size	A	20	25	32	32	16	16	16
Interconnection Wiring	Core / Cable Size		3+E / 1.5				3+E / 1.5		
Piping Connections	Liquid / Gas	inches (mm)	3/8 (9.5) / 5/8 (15.9)				3/8 (9.5) / 5/8 (15.9)		
Pipework	Maximum Length	m	30	30	30	30	30	30	30
	Maximum Vertical Rise	m	30	30	30	30	30	30	30
	Precharged to	m	30	30	30	30	30	30	30
Additional charge		g/m	Refer to Installation Manual				Refer to Installation Manual		
	Holding charge	kg	2.45	2.60	2.60	2.90	2.60	2.60	2.90
Sound Pressure (Cooling)	Nom / Night Quiet	dBA	46/42	53/44	53/44	54/44	53/44	53/44	54/44
Sound Pressure (Heating)	Nom / Night Quiet	dBA	47/42	57/44	57/44	57/44	57/44	57/44	57/44
Sound Power (Cooling)		dBA	65	70	71	73	70	71	73
Operating Range (Cooling)	Min / Max	°CDB	-5/46	-5/46	-5/46	-5/46	-5/46	-5/46	-5/46
Operating Range (Heating)	Min / Max	°CWB	-15/15.5	-15/15.5	-15/15.5	-15/15.5	-15/15.5	-15/15.5	-15/15.5
Air Flow Rate (Cooling)	Nominal	m³/sec	0.933	1.150	1.183	1.266	1.150	1.183	1.266

Accessory Ref	Description
BRC1E53A	Premium wired remote controller (Included as standard)
BYCQ140D	Decoration panel (Included as standard)
BRP069A81	Wifi adaptor for connection to on-line controller
BRC7FA532F	Wireless remote controller
BRYQ140A	Integral PIR sensor for roundflow decoration panel. Enables energy saving functions
BYCQ140DG9	Roundflow cassette decoration panel with self cleaning filter
BYCQ140DGF9	New Roundflow cassette decoration panel with fine self cleaning filter
BYCQ140DW	Roundflow cassette decoration panel - white with white louvres
K.CGL	Condensing unit guard size 100-140 including RXYSQ
K.CGM	Condensing unit guard size 42-71
K.CWB140-2	Condensing unit bracket - size 100 to 140
K.CWB90-2	Condensing unit bracket - up to size 71, max weight 90kg of ODU
K.DT1	Condensate drip tray for use with K.CWB90-2

Accessory Ref	Description
K.DT2	Condensate drip tray for use with K.CWB140-2
K.R55	Wireless room mounted temperature sensor and receiver
KDBHQ55B140	Sealing member for air discharge outlet
KDDP55C160-1	Fresh air intake kit for up to 20% fresh air (Part 1)
KDDQ55B140-2	Fresh air intake kit for up to 20% fresh air (Part 2)
KLIC-DI	KNX Interface for Sky Air and VRV systems
KRCS01-4	Remote room mounted temperature sensor
KRP4A53 and UK.FB2	Unit/group adaptor PCB for remote on/off, status indication and temperature setting
RS-SE	Service and configuration tool for K.R55
RTD-10 and UK.FB2	Enhanced function PCB for Sky Air and VRV. Duty rotation, Lead Lag control and heating interlock
RTD-20 and UK.FB2	Energy control PCB for Sky Air and VRV
RTD-NET and UK.FB2	Modbus interface PCB for Sky Air and VRV

The present leaflet is drawn up by way of information only and does not constitute an offer binding upon Daikin UK. Daikin UK has compiled the content of this leaflet to the best of its knowledge. No express or implied warranty is given for the completeness, accuracy, reliability or fitness for particular purpose of its content and the products and services presented therein. Specifications are subject to change without prior notice. Daikin UK explicitly rejects any liability for any direct or indirect damage, in the broadest sense, arising from or related to the use and/or interpretation of this leaflet. All content is copyrighted by Daikin UK.



Daikin Europe N.V. participates in the Eurovent Certification programme for Air conditioners (AC), Liquid Chilling Packages (LCP), Air handling units (AHU) and Fan coil units (FCU). Check ongoing validity of certificate online: [www.eurovent-certification.com](http://www.eurovent-certification.com) or using: [www.certiflash.com](http://www.certiflash.com)